



Lift Hold & Separate



Magnetic solutions for all industries

## FORCE-LIFT® LIFTING THE LIMITS.

The first and only  
**instinctively operateable**  
vacuum tube lifter.



THERE WAS STILL  
SPACE FOR IMPROVEMENT.  
**WE USED IT.**

## OUR ALLROUNDER FOR MANY INDUSTRIES

The FORCE-LIFT® enriches in almost every sector.



### LOGISTICS & PACKAGING

Intra- and distribution logistics, shipping of packages, raw material in bags, drums and canisters.



### SHEET METAL AND PLASTIC PROCESSING

Loading and unloading of machining equipment with parts and handling of metal and plastic assemblies.



### ELECTRICAL INDUSTRY, WOOD AND FURNITURE INDUSTRY

Production and loading of electrical components, rough and smooth wooden elements, furniture.



### OTHER INDUSTRIES, including the food industry, pharmaceutical industry, glass processing



production and loading of bags, drums, canisters, glass and windows.

## MAY WE INTRODUCE? YOUR STRONGEST EMPLOYEE.

Our decades of experience in vacuum lifting technology have shown us:

**It's time to set new standards for tube lifters.**

The motivation to find the best handling solution for each of our customers has driven us to this innovation.

With a lot of ingenuity and heart and soul, we have achieved what was long considered impossible.

A truly instinctive control of the device. With one hand up to 75 kg, even for porous transport goods or with recesses. Fast, strong, ergonomic. You don't believe that? Then:

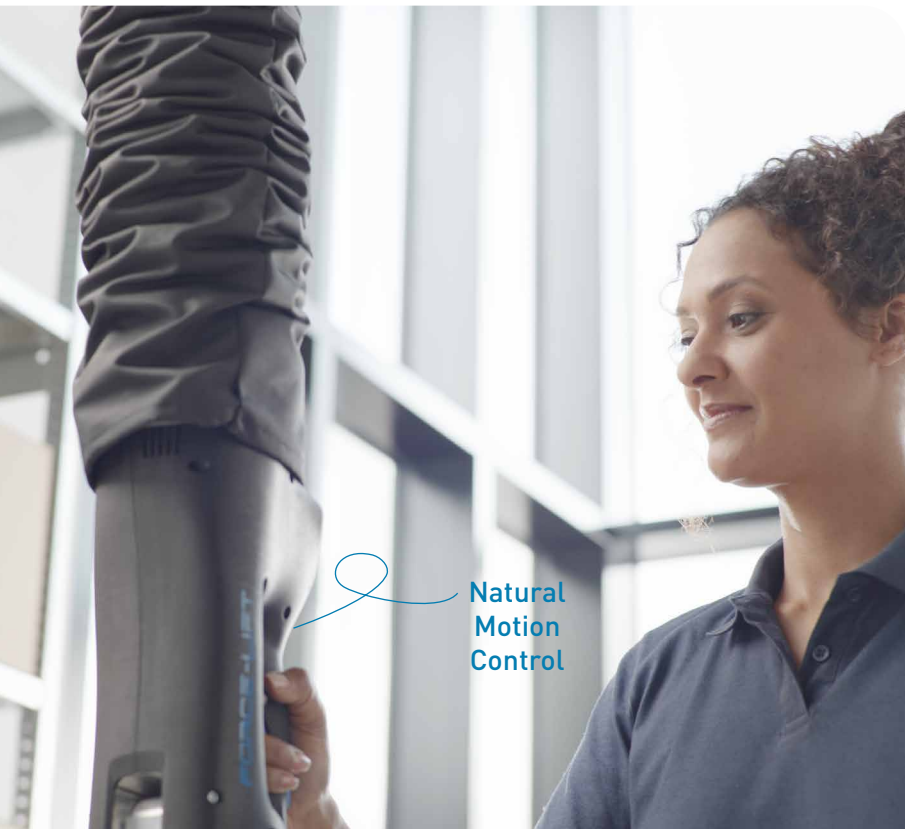
**LET THE MAGIC HAPPEN.**



**FORCE-LIFT®**  
ALL BENEFITS AT A GLANCE.

- ⊕ up to 75 kg load capacity with one-hand operation
- ⊕ instinctively operation and control
- ⊕ percent handling of airtight as well as porous material
- ⊕ floating function with or without a transport item
- ⊕ ergonomic shape and aesthetic design

## FOLLOWS YOUR INSTINCT.



Natural  
Motion  
Control

**The FORCE-LIFT® is the first and only tube lifter that adapts to instinctive operator behaviour and not vice versa, thanks to the **Natural Motion Control** unit.**

This means that pressing the controls activates the function, i.e. lifting the tube lifter. To lower the load, the controls are released, smoothly and precisely.

This minimizes operating errors and reduces injuries. In addition, the FORCE-LIFT® is also suited for employees who perform these tasks only occasionally. Routine is not necessary for operation.

## FOR POROUS AND FRAGMENTARY TRANSPORT GOODS.

**Boxes bags, wood or checker plate? Easy for the all-rounder of vacuum technology!**

Quick-change suction feet allow the handling of airtight as well as porous materials with only one device, e.g. boxes, barrels, sacks, canisters, sheets or wooden elements.

In combination with the VUSS large-area gripper technology, workpieces with recesses, countersinks and grooves such as checker plates, perforated plates or rough-sawn wood can also be suctioned and transported.





## 75 KILOGRAM. ALL THAT ONE-HANDED.



### **75 kilogram. All that one-handed.**

You don't need power, as it has enough: The FORCE-LIFT® is the strongest one-hand tube lifter on the market.

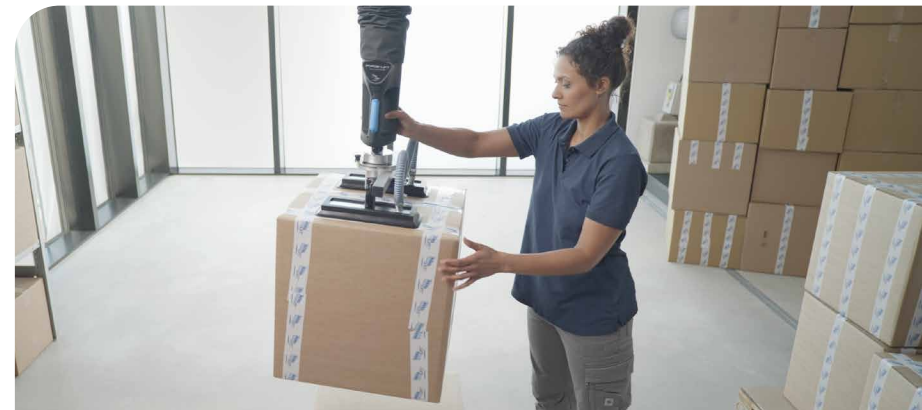
By carrying up to 75 kg, depending on the goods being transported, this all-rounder masters heavy and light lifting tasks at the same time. In addition, it is equally suitable for left- and right-handers.

### **Transporting has never been so easy.**

The FORCE-LIFT® can remain freely suspended in a parking position, with or without the aspirated material.

The rotation and swiveling function makes it very easy to maneuver transport goods.

## LET IT FLOAT. EVEN WITH LOAD.



## ERGONOMIC WORK MOTIVATES AND ECONOMIZES.

Energy-sapping work processes are a thing of the past: The new and simple workflows with the FORCE-LIFT® relieve and motivate employees equally.

It guarantees an easy activity, that is gentle on the joints - even with repetitive movements.

The health of your employees is preserved as well as sick days and costs are minimized.

### Your benefits using the FORCE-LIFT®:



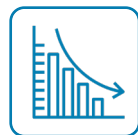
saves your  
energy



gentle on joints  
and health  
preservation



increasing  
motivation &  
productivity

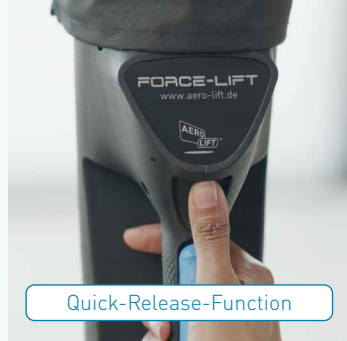


minimizing  
sick leave



cost reduction





Quick-Release-Function



Quick-Change Coupling



90° Swiveling Function



## THERE IS MORE TO DISCOVER. ALL FUNCTIONS AT A GLANCE.

- + Quick-Release-Function**  
For a maximum of safety, the transport item can be released quickly, but only intentionally. This disconnection of the functions during the suction process is unique.
- + Instinctive lifting & lowering**  
In a smooth and precise way.
- + For left- and right-handers**  
The design of the controls allows operation with both hands.
- + Quick-Change Coupling**  
Transporting boxes now and barrels later? No problem thanks to the quick-change coupling, which allows the suction foot to be changed without tools and in seconds.
- + 360° Rotation Function**  
The 360° rotation function enables endless, horizontal rotation of the goods to be transported and thus precise positioning. The rotation is performed manually and smoothly.
- + 90° Swiveling Function**  
The material to be transported can be manually picked up vertically and positioned horizontally - perfect for transferring goods, such as when picking boxes.
- + Precisely leaded with just one hand.**  
The light operating element is located above the material to be transported and is thus guided directly and specifically with one hand. The second hand can be used to lead the transport material.

# SUCTION FOOT VARIETY. THE RIGHT SUCTION FOOT FOR EVERY MATERIAL.

The suction feet can be exchanged within seconds without tools - the quick-change coupling makes this possible. There is a choice of different suction feet that cover almost every material.

Select the suction foot that is suitable for your transport item:



Double rectangular suction foot



**Suitable for:**

**air permeable surfaces**

- boxes
- wood (natural wood, OSB, MDF)

**closed surfaces**

- metal parts
- glass
- coated wood
- plastic parts

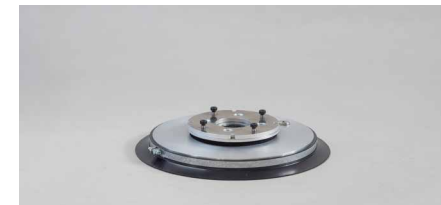
Bag suction foot



**Suitable for:**

- bags

Round suction foot



**Suitable for:**

**closed surfaces**

- barrels
- container
- tons



Area gripper suction foot



**Suitable for:**

**air permeable surfaces**

- with recesses, grooves, countersinks
- deburring parts
- single part elements
- several workpieces at the same time

Hook / canister foot



**Suitable for:**

- canister
- bucket
- cans

## INDIVIDUALLY CONFIGURED.

A wide range of components and extensions are available for the FORCE-LIFT®, tailored to your individual requirements and area of application.

Together with you, we configure the optimal combination of suction foot, lifting tube and crane system from our modular system.

**Surfaces**

Air permeable surfaces, closed surfaces

**Transport goods**

Boxes, metal parts, plastic parts, glass, wood (natural wood, coated wood), bags, buckets, canisters, barrels

**Suction feet variety**

Double rectangular suction foot, Bag suction foot, Round suction foot, Area gripper suction foot, Hook / canister foot

**Load capacity**

Up to 75 kg

**Vacuum generator**

Pump, blower

**Height work area**

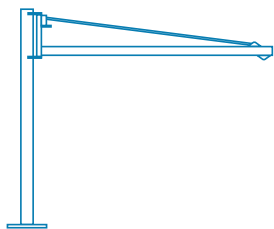
> 150 mm

**Crane systems**

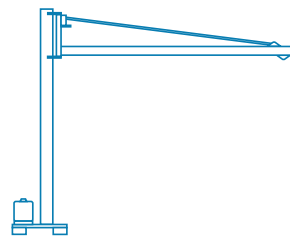
Column slewing crane, Wall-mounted crane, Ceiling rail system

# CRANE SYSTEMS.

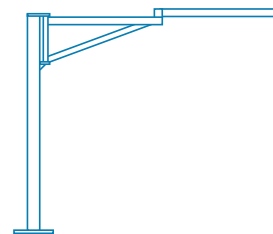
According to your individual requirements, we offer the suitable crane system for your FORCE-LIFT® configuration:



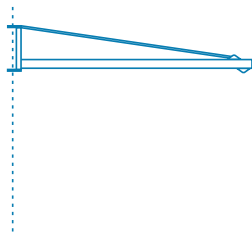
Column-mounted slewing crane



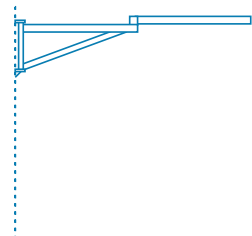
Mobile column slewing crane



Column slewing crane with knuckle boom



Wall-mounted slewing crane



Wall-mounted slewing crane with knuckle boom



Ceiling rail system

# TECHNICAL SPECIFICATIONS.

Load capacity maximum	75 kg
Possible transport goods	Boxes, bags, buckets, canisters, barrels, and more.
Own weight operating head	2,4 kg
Lifting tube diameter	Ø100 mm, Ø120 mm or Ø160 mm
Vacuum generator	Pump VAL 50T, VAL 80T   Blower: 3 kW
Noise level	Pump 55 dB(A)   Blower: 74-80 dB(A)
IP protection class	IP 31

# BORN FOR THE VERY BIG STAGE.

Get the experience of the FORCE-LIFT® in our informative product film and in our exciting movie.

## Product Film



## Movie



Lift Hold & Separate  
**LHS**   
Magnetic solutions for all industries



## AERO-LIFT Vakuumtechnik GmbH

Turmstr. 1  
D-72351 Geislingen-Binsdorf

Fon: +49 (0) 74 28/94 514-0  
Fax: +49 (0) 74 28/94 514-38

info@aero-lift.de  
www.aero-lift.de



**LIFTING**  
**FIXING MOVING**  
VACUUM LIFTING TECHNOLOGY